



One Chesterfield Place

14755 N Outer Forty Rd, Chesterfield, MO 63017



FOR MORE INFORMATION CONTACT:

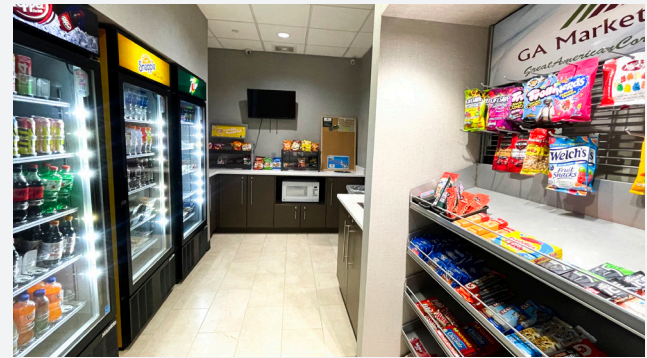
Andy Bagy | (314) 746-1467
abagy@gershmancre.com



Gershman
Commercial Real Estate

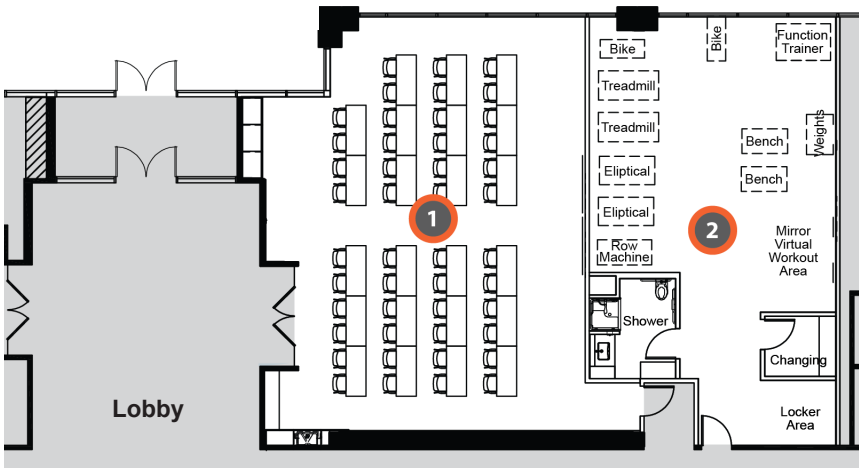
**1,488 SF - 29,812 SF
OFFICE FOR LEASE**

- Suites Available:
 - Suite 105 - 1,488 SF
 - Suite 150 - 6,480 SF
 - Suite 204 - 3,418 SF
 - Suite 207 - 2,581 SF
 - Third Floor - 29,812 SF**
 - Suite 510 - 4,053 SF
 - Suite 518 - 6,522 SF
- Prominent 1st Floor Lobby Suite Available
- New to Market, Entire 3rd Floor Available
- New Conference/Training Room & Fitness Center
- Remodeled Lobby, Self-Serve Market & Outdoor Seating
- Complimentary Covered & Surface Parking
- Monument and Building Signage Opportunity for Large Tenant
- Easy Access to I-64, I-270 & Hwy 141
- Local Ownership
- Lease Rate: \$28.00 PSF, Full Service



**NEW TENANT
AMENITIES**

- 1** Conference/
Training Room
- 2** Fitness Center



The information contained herein is not warranted, although it has been obtained from the owner of the property or from other sources we deem reliable. It is subject to change without notice. Owner and broker make no representation as to the environmental condition of the property and recommend purchaser's/tenant's independent investigation.