



Topping Office Center 13100 Manchester Rd

Des Peres, MO 63131

2,173 SF
OFFICE FOR LEASE

- Former Psychology Office Available
- Convenient Manchester/I-270 Location at Topping Rd just East of U-Turn Ramp
- Last Suite Available
- Common Corridors Recently Updated
- Near Restaurants, West County Mall, Trader Joe's & St. Louis Bread Company
- Abundant Parking
- Lease Rate: \$19.00 PSF, FS

FOR MORE INFORMATION CONTACT:

Tim Balk, MBA | (314) 746-1433
tbalk@gershmancre.com

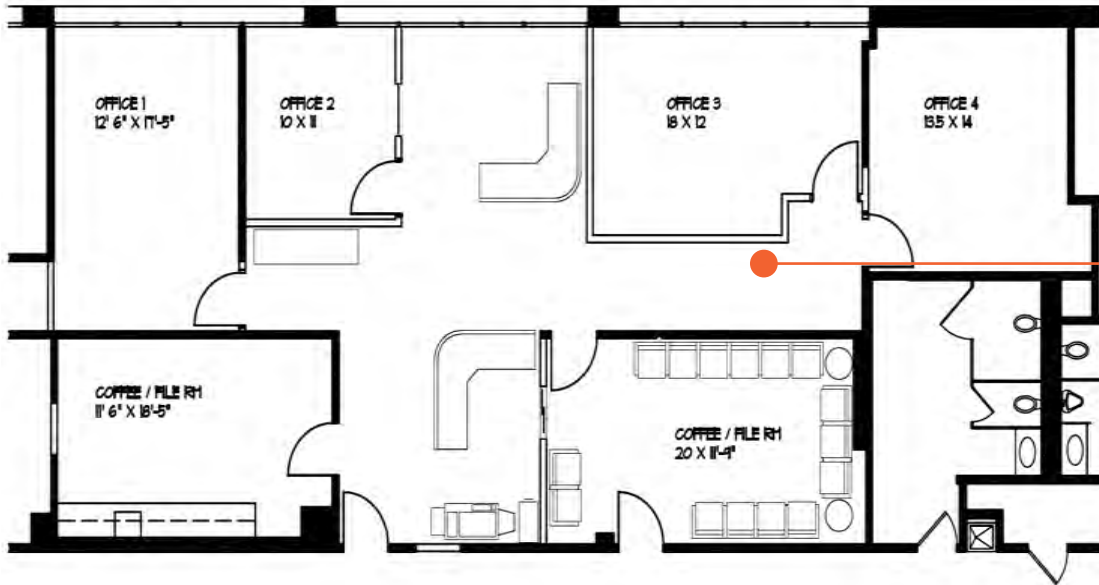


Gershman
Commercial Real Estate

GERSHMANCRE.COM



13100 Manchester Rd



Suite 150
2,173 SF