

2811 & 2815 Locust St

St. Louis, MO 63105



FOR MORE INFORMATION CONTACT:

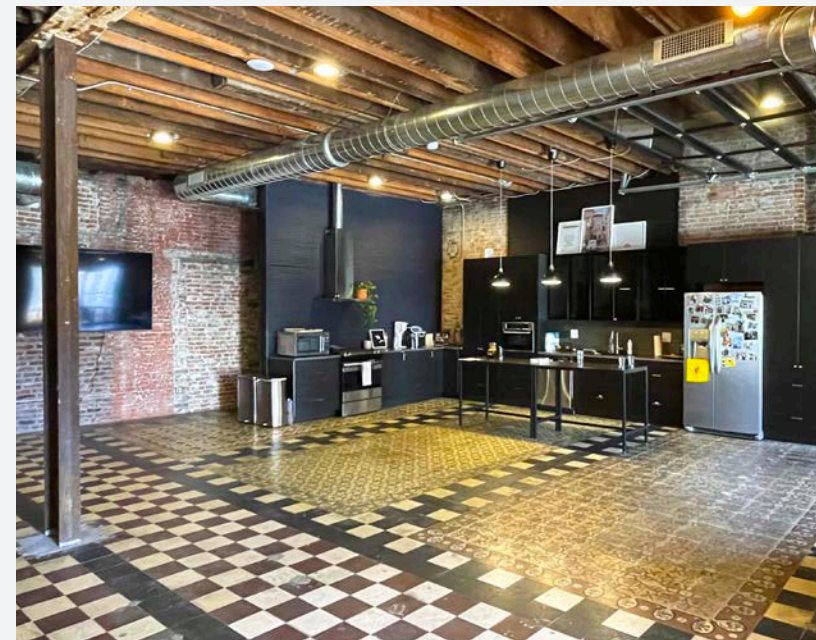
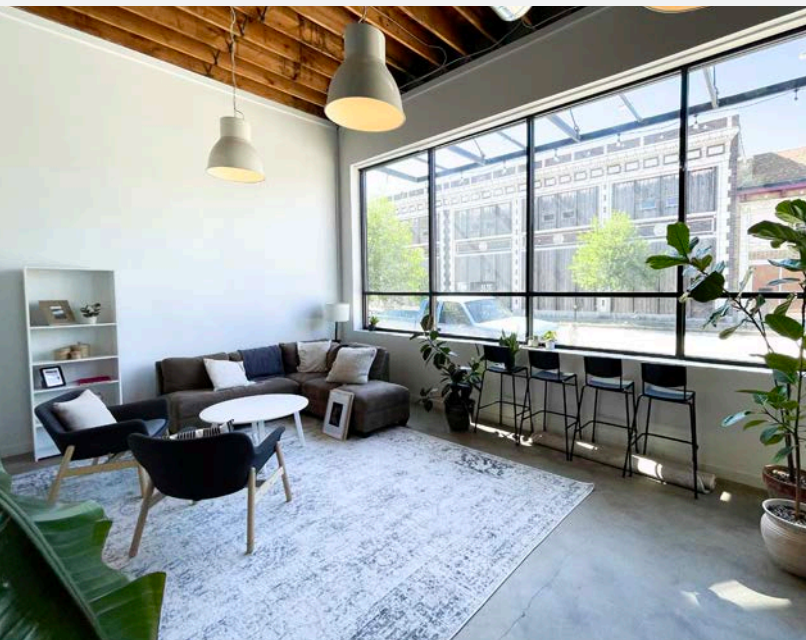
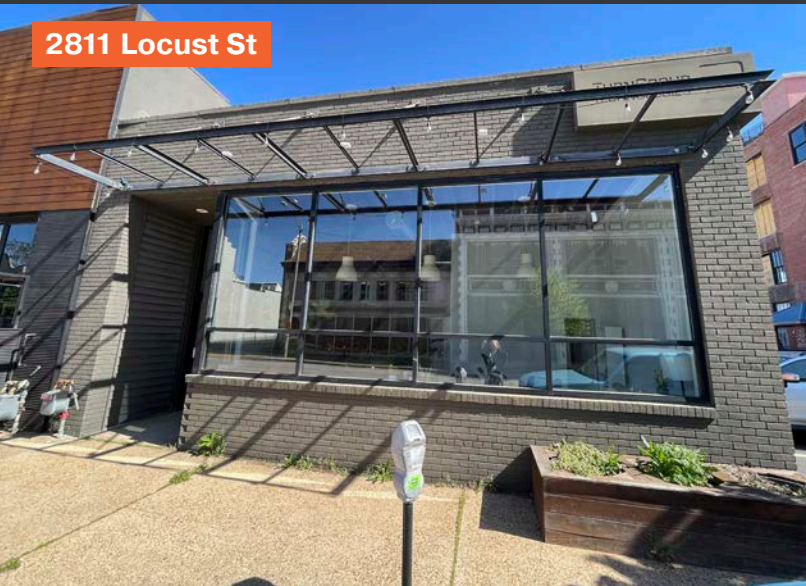
Louis Copilevitz | (314) 746-1451
lcopilevitz@gershmancre.com

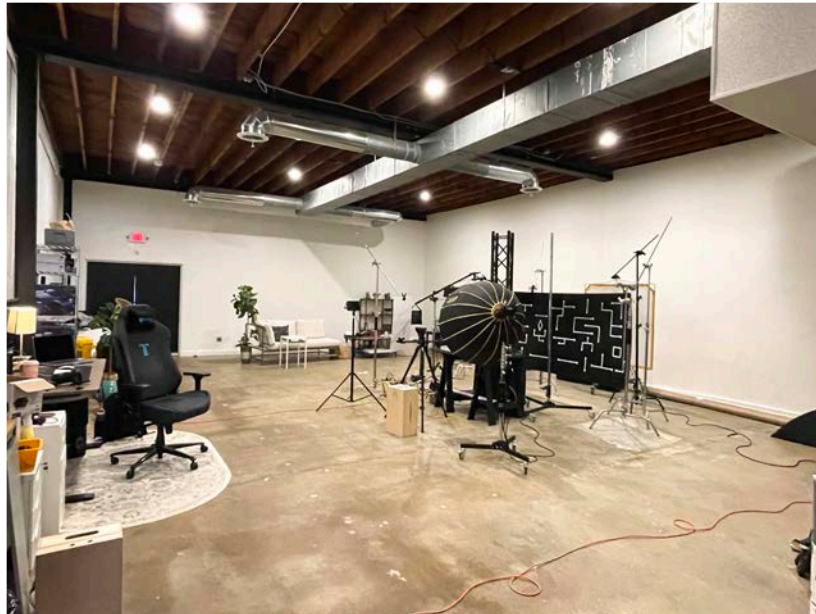
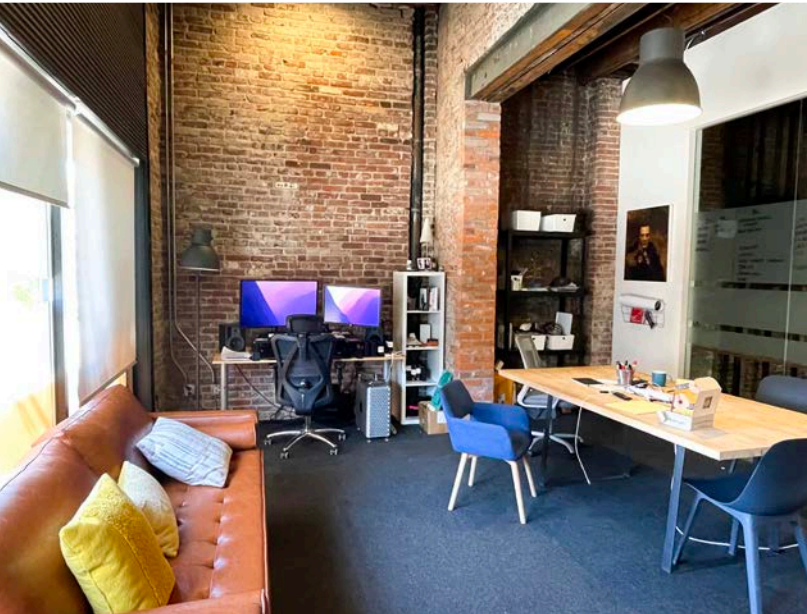
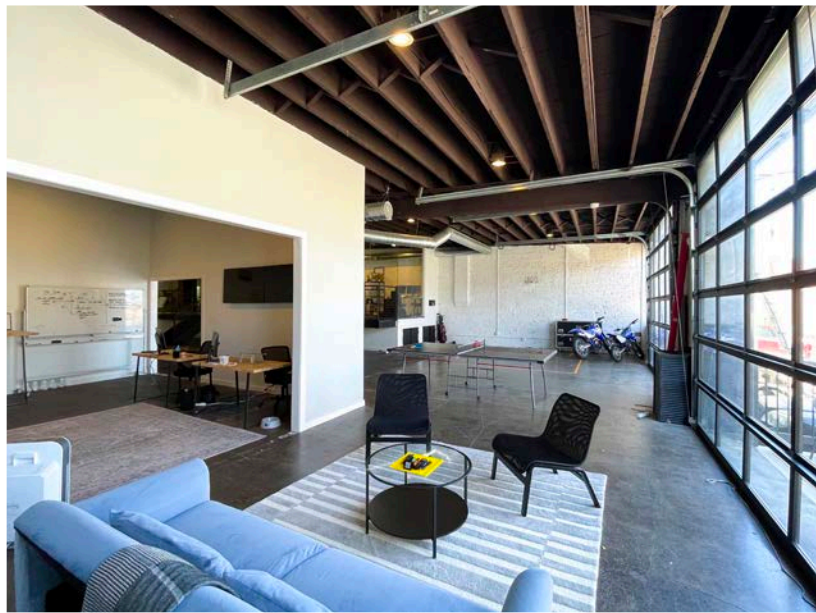
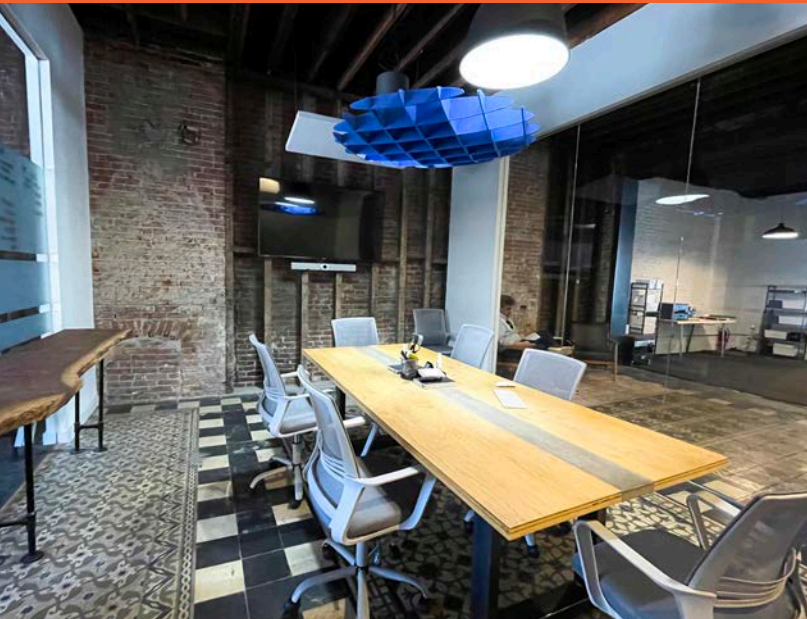
Lou Panopoulos | (314) 746-1428
lpanopoulos@gershmancre.com

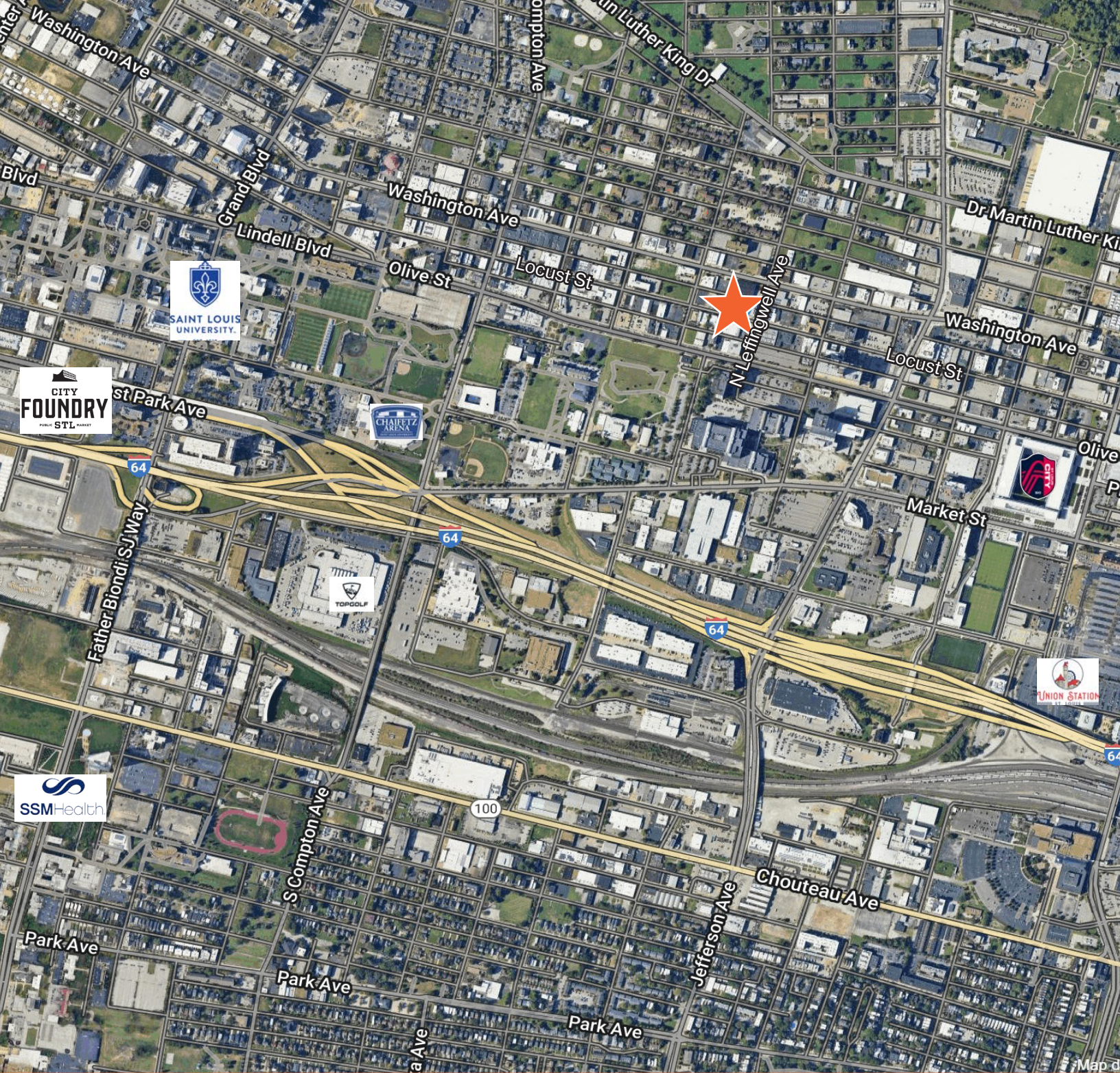


8,577 SF OFFICE BUILDINGS **Investment Property**

- 100% Leased Office/Retail Property
- Located in the Newly Named “City Commons” Neighborhood in Mid-Town
- Recently Renovated, Unique, Creative Space
- 2 Contiguous Buildings: 2811 Locust St (3,277 SF) & 2815 Locust St (5,300 SF)
- Sale Price: Call Broker







FOR MORE INFORMATION CONTACT:

Louis Copilevitz | (314) 746-1451
lcopilevitz@gershmancre.com

Lou Panopoulos | (314) 746-1428
lpanopoulos@gershmancre.com



The information contained herein is not warranted, although it has been obtained from the owner of the property or from other sources we deem reliable. It is subject to change without notice. Owner and broker make no representation as to the environmental condition of the property and recommend purchaser's/tenant's independent investigation.